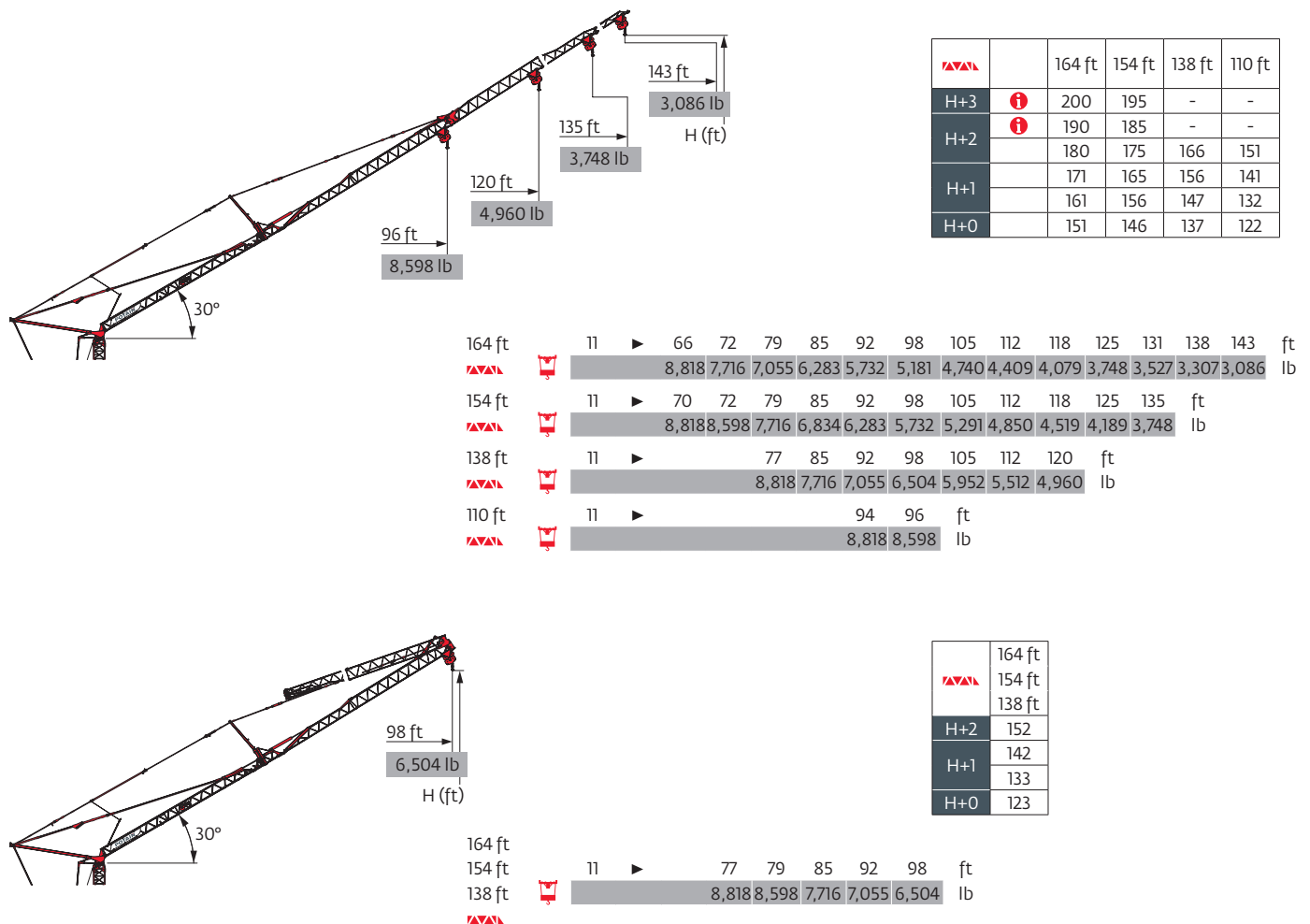
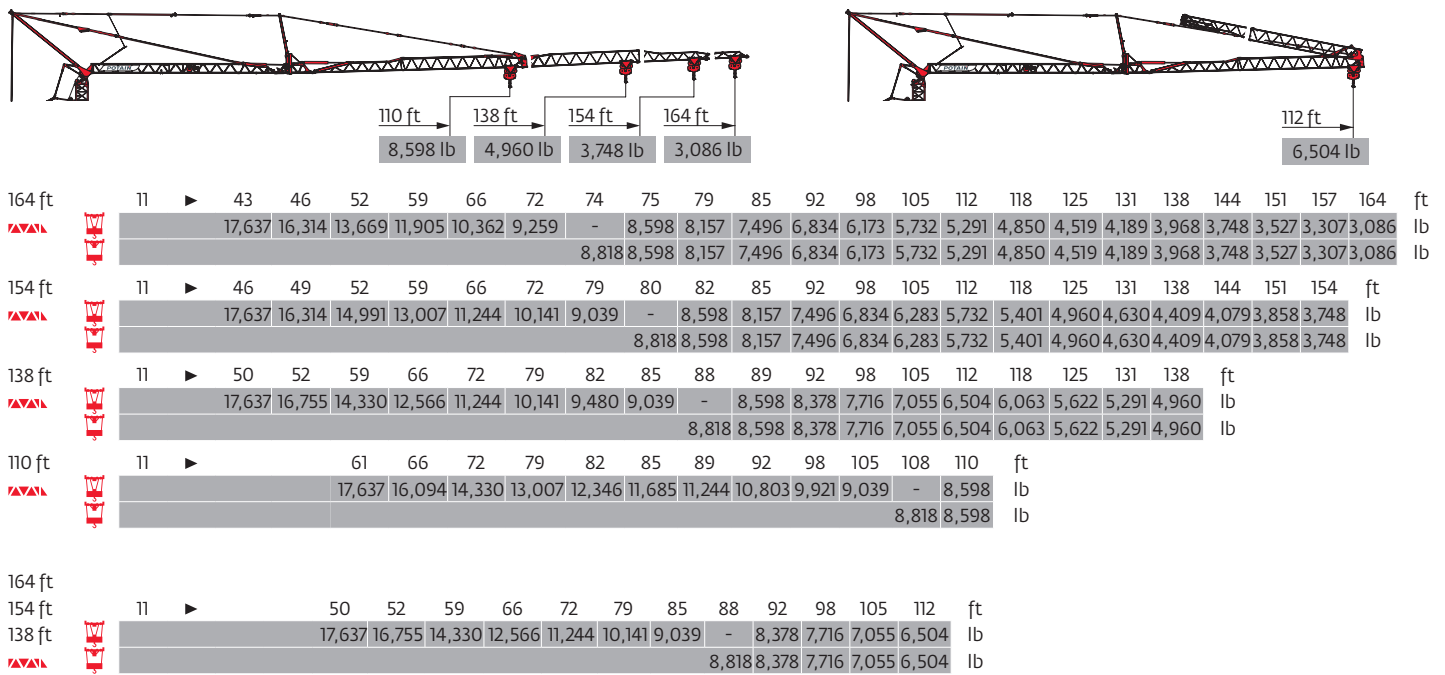












Load curves

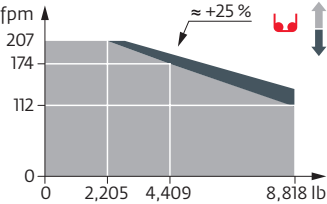


Mechanisms

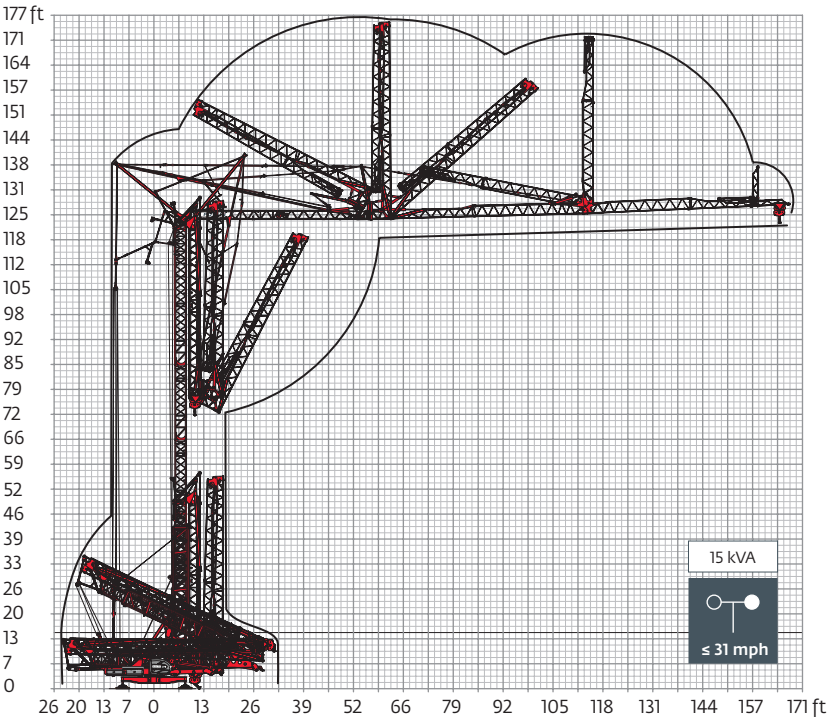
480 V - 60 Hz													hp	kW
	33 LVF 20 Optima	fpm	10	52	112	174	207	5	26	56	87	103	29.5	22
		lb	8,818	8,818	8,818	4,409	2,205	17,637	17,637	17,637	8,818	4,409		
	5 DVF 5	fpm	49 - 98 - 128 (4,409 → 17,637 lb) 49 - 98 - 180 (441 → 4,409 lb) 49 - 98 - 230 (0 → 441 lb)										5.4	4
	RVF 161 Optima+	rpm	0 → 0.8										7.5	5.5
	TVF 124	fpm	82										2 x 4	2 x 3

 IEC 60204-32	kVA
480 V (+6% -10%) 60 Hz	 31 → 19 kVA  35 → 22 kVA 

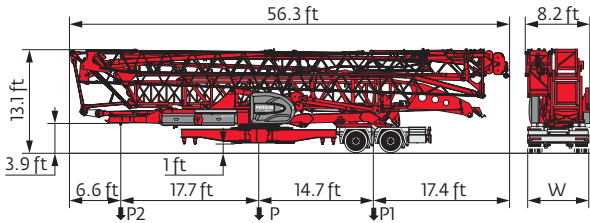
33 LVF 20 Optima



Erection

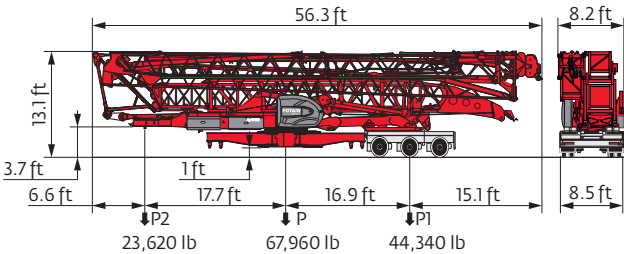


Transport



	mph	W (ft)	P (lb)	P1 (lb)	P2 (lb)
SL121/S215M	15.5	7.9	66,359	42,549	23,810

NORTH AMERICAN HIGHWAY AXLE



- R

Consult us

Reactions in service

Reactions out of service

Weight without load, without ballast, without transport axles, with max. jib and standard height

Total ballast weight

Standard equipment

Options

Hoisting

Trolleying


Slewing

Travelling

kVA

Required power

Power Control Function: winch speeds adapted to the available power

 This commercial document is not legally binding. For any technical information, please refer to the corresponding instructions.

