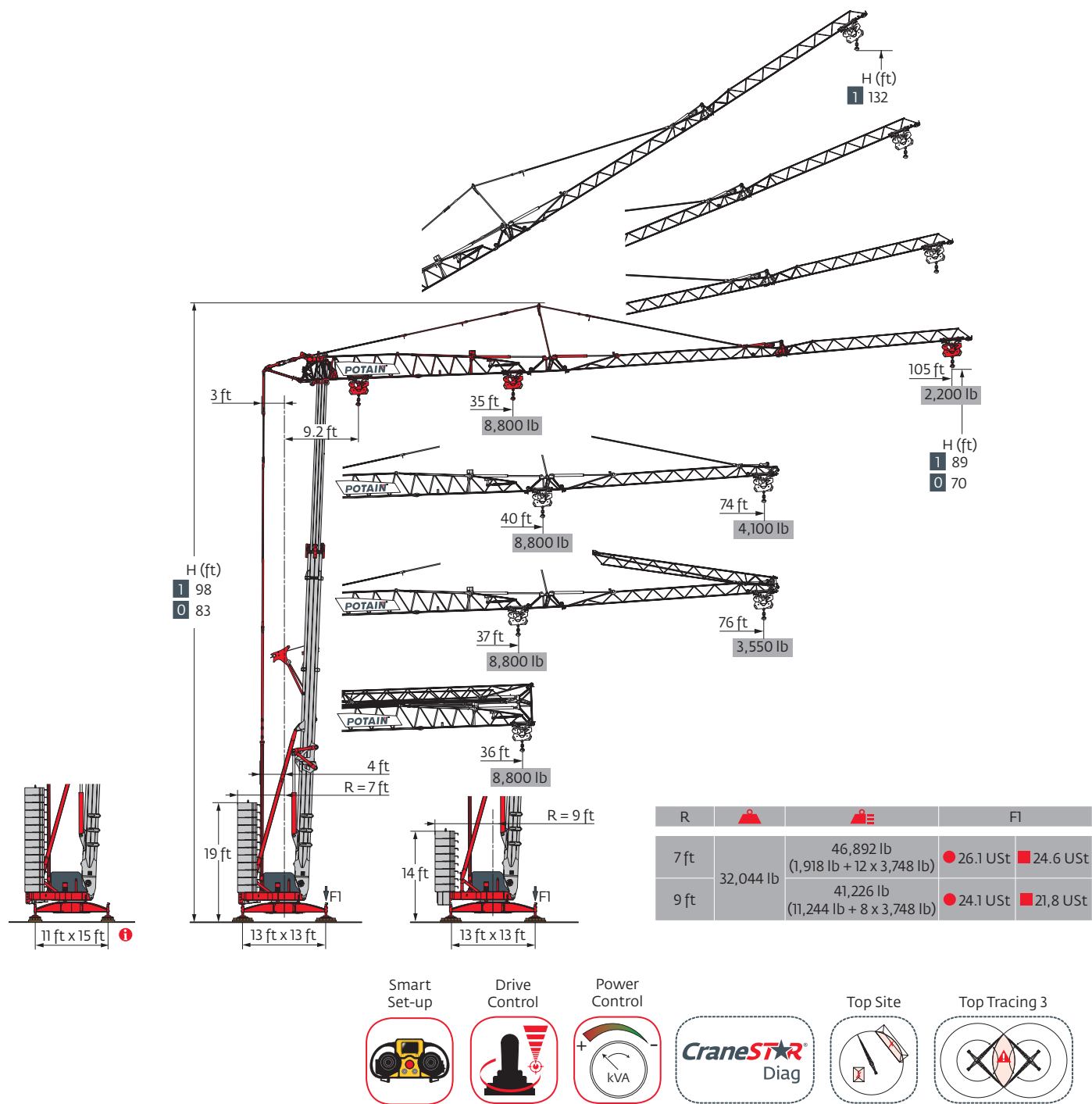
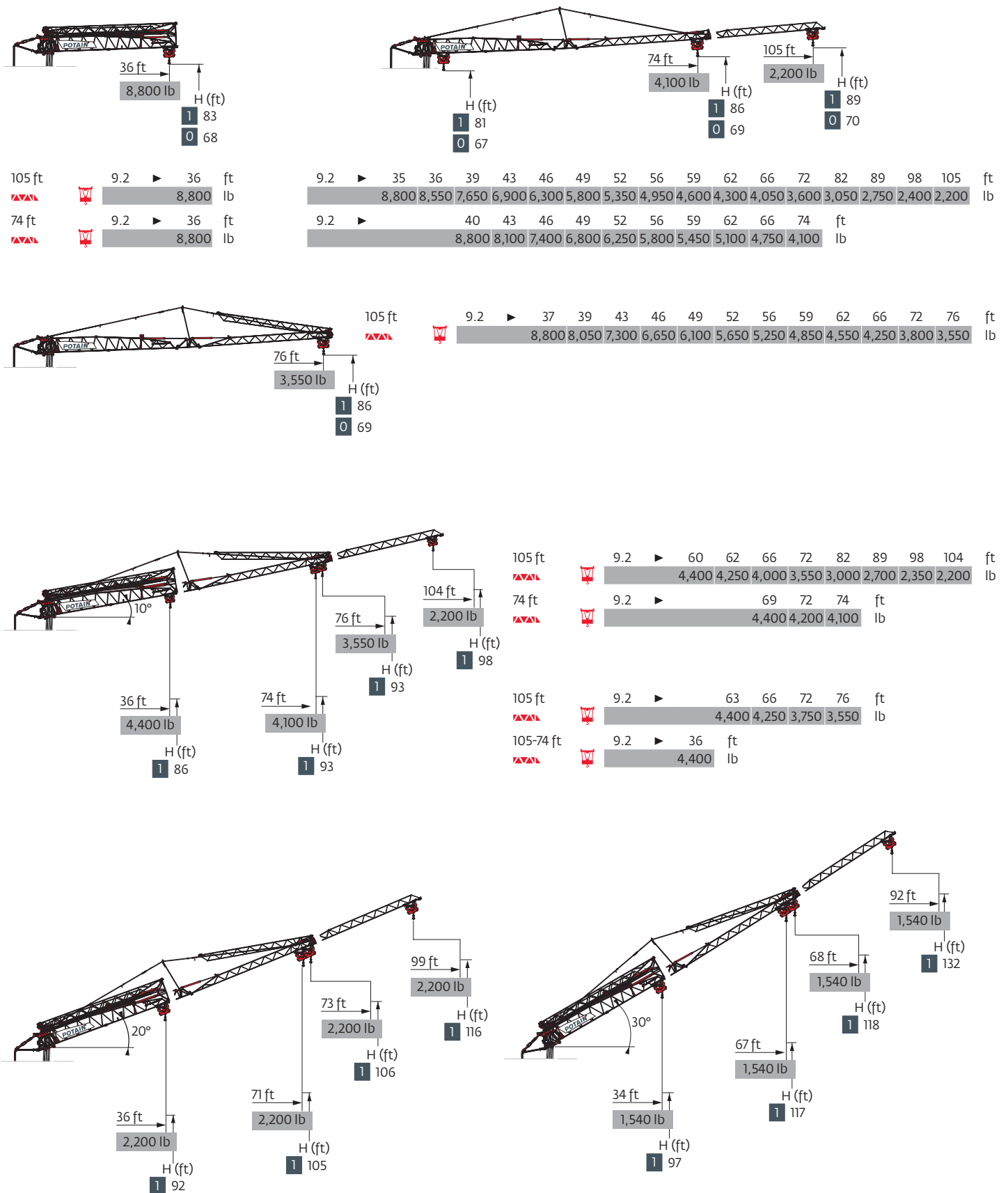






Hup 32-27






Load curves

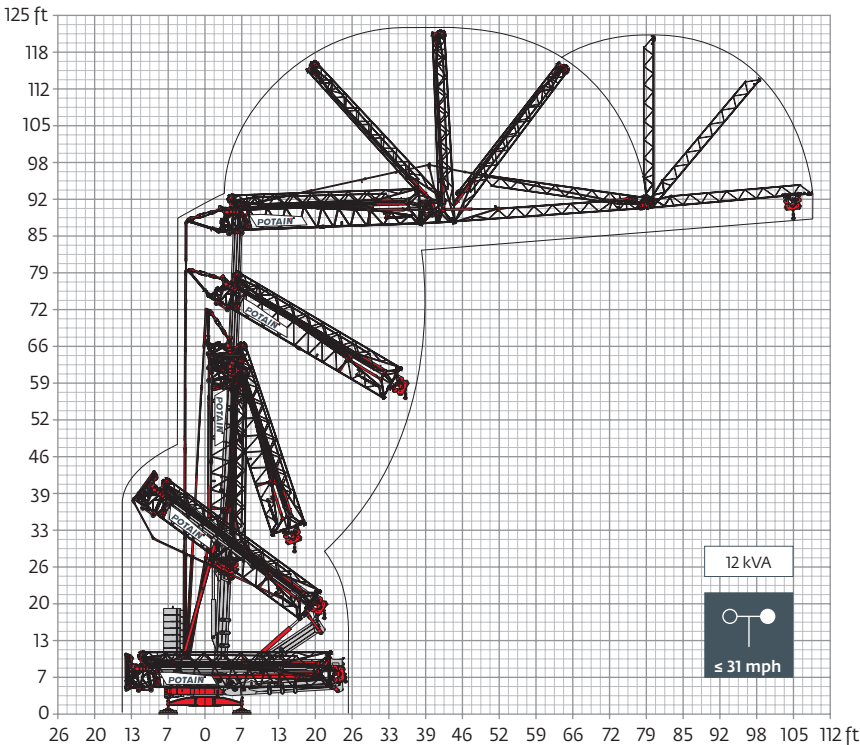


Mechanisms

480 V - 60 Hz								hp	kW
	18 HPL™ 10	fpm	6	62	118	190	213	18	13
		lb	8,800	8,800	4,400	2,200	1,100		
	3 DVF 5	fpm	3 → 148 (0 → 2,200 lb) 3 → 135 (2,200 lb → 8,800 lb)					3	2.2
	HPS 141	rpm	0 → 0.9					5	3.7

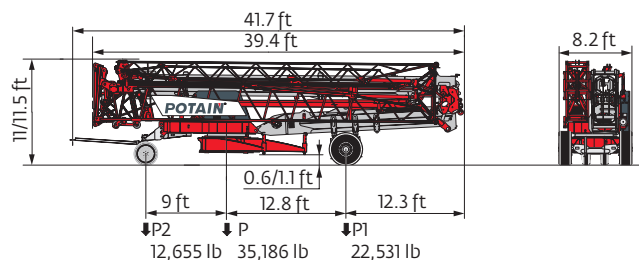
 IEC 60204-32	 kVA	
480 V (+6% -10%) 60 Hz	19 → 13 kVA	

Erection

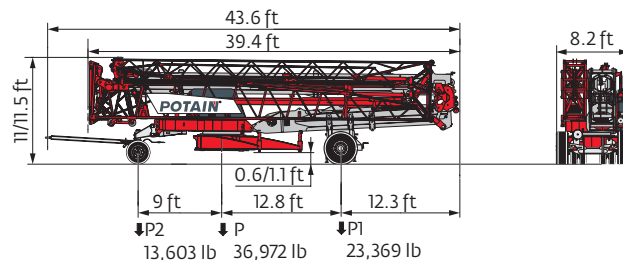


Transport

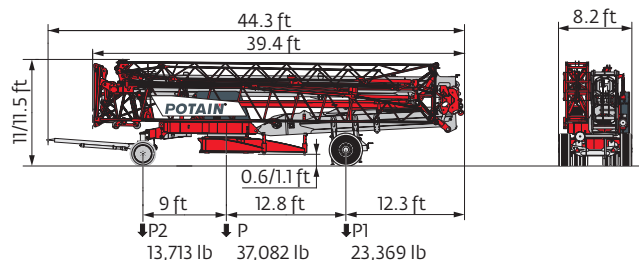
DS62/S120 - 6 mph



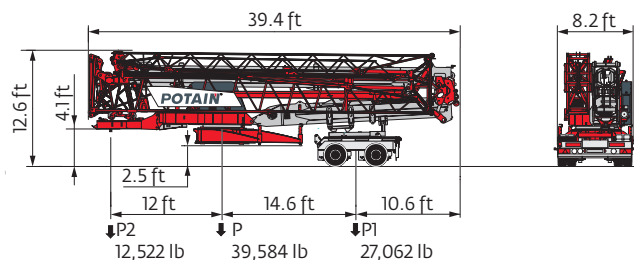
DJ105/S125 - 15.5 mph



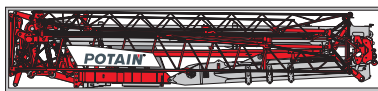
DJ126M/S125 - 15.5 mph



North America Highway Axle



Container High Cube 40'



- | | | | |
|----------|--|--|--------------------|
| R | Rear slewing radius | | Standard equipment |
| | Consult us | | Options |
| | Reactions in service | | Hoisting |
| | Reactions out of service | | Trolleying |
| | Weight without load, without ballast, without transport axles, with max. jib and standard height | | Slewing |
| | Total ballast weight | | Required power |

Power Control Function: winch speeds adapted to the available power

This commercial document is not legally binding. For any technical information, please refer to the corresponding instructions.

