

Regional headquarters

<p>Americas Manitowoc, Wisconsin, USA Tel: +1 920 684 6621 Fax: +1 920 683 6277</p> <p>Shady Grove, Pennsylvania, USA Tel: +1 717 597 8121 Fax: +1 717 597 4062</p>	<p>Europe, Middle East, Africa Dardilly, France - TOWERS Tel: +33 472 18 20 20 Fax: +33 472 18 20 00</p> <p>Wilhelmshaven, Germany - MOBILE Tel: +49 (0) 4421 294 0 Fax: +49 (0) 4421 294 4301</p>	<p>China Shanghai, China Tel: +86 21 6457 0066 Fax: +86 21 6457 4955</p> <p>Greater Asia-Pacific Singapore Tel: +65 6264 1188 Fax: +65 6862 4040</p> <p>Dubai, UAE Tel: +971 4 8862677 Fax: +971 4 8862678/79</p>
---	--	--



Grove crane range

Pocket guide
ASME B30.5
Imperial/Metric



Crane Range



> Rough-terrain cranes
Grove rough-terrain cranes are designed to handle tough job site conditions. Inverted outrigger jacks, compact dimensions and four steering modes allow easy setup and on-site maneuvering.



> Truck cranes
Grove truck cranes feature quick set-up, long reach, high capacity booms and highway speed travel capabilities. A front stabilizer is standard for 360° operation.



> Carrydeck cranes
Grove carrydeck cranes are perfect for plant maintenance and material handling jobs. Multi-mode steering and tight dimensions deliver easy maneuverability.



> All-terrain cranes
Grove all-terrains combine truck crane highway speeds with the off-road performance characteristics of our MEGATRAK™ suspension. Travel speeds to 55 mph (85 km/h) get you to the job quickly.



> Telescoping crawler
The GHC series combines excellent gradeability and lift capacity with 100 percent pick and carry capability. Engineered for exceptional maneuverability, with rugged, heavy-duty crawler tracks and telescoping boom.

> Special Applications
Grove continues to design and manufacture specialized military cranes for demanding schedules and ever changing environments. Whether a mission requires an all-terrain, rough-terrain, or carrydeck crane, Grove has the solution.

This document is non-contractual. Constant improvement and engineering progress make it necessary that we reserve the right to make specification, equipment, and price changes without notice. Illustrations shown may include optional equipment and accessories and may not include all standard equipment.

Crane Range



GRT8100



RT9150E



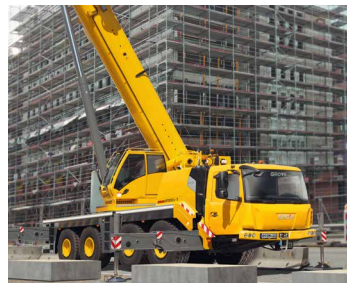
TMS9000-2



GCD25



GMK6400



GMK4100L-1



GHC55

Model	Capacity	Main boom	Extension	Max	Model
Rough-terrain					
RT530E-2	30 USt / 30 t	95 ft / 29,0 m	26 ft - 45 ft / 7,9 m - 13,7 m	146 ft / 45,0 m	RT530E-2
RT540E	40 USt / 35 t	102 ft / 31,0 m	26 ft - 45 ft / 7,9 m - 13,7 m	154 ft / 47,0 m	RT540E
RT600E	50 USt / 50 t	105 ft / 32,0 m	29 ft - 51 ft / 8,8 m - 15,5 m	162 ft / 49,3 m	RT600E
RT765E-2	65 USt / 60 t	110 ft / 34 m	33 ft - 96 ft / 10,0 m - 29,2 m	214 ft / 65,2 m	RT765E-2
RT770E	70 USt / 65 t	138 ft / 42,0 m	33 ft - 76 ft / 10,1 m - 23,2 m	221 ft / 67,4 m	RT770E
NEW GRT880	80 USt / 80 t	134.5 ft / 41,0 m	33 ft - 76 ft / 10,0 m - 23,0 m	223.3 ft / 68,0 m	GRT880
GRT8100	100 USt / 90 t	154.3 ft / 47,0 m	33 ft - 76 ft / 10,0 m - 23,0 m	239.4 ft / 72,9 m	GRT8100
RT9130E-2	130 USt / 120 t	160 ft / 48,8 m	36 ft - 111 ft / 11,0 m - 34,0 m	279 ft / 85,0 m	RT9130E-2
RT9150E	150 USt / 135 t	197 ft / 60,0 m	36 ft - 105 ft / 11,0 m - 32,0 m	312 ft / 95,3 m	RT9150E

Truck-mounted					
TMS700E	50 - 60 USt / 50-55 t	110 ft / 34 m	33 ft - 96 ft / 10,0 m - 29,2 m	212 ft / 65 m	TMS700E
TMS800E	80 USt / 70 t	128 ft / 39 m	33 ft - 96 ft / 10,0 m - 29,2 m	230 ft / 70 m	TMS800E
NEW TMS9000-2	115 USt / 100 t	169 ft / 51,6 m	34.5 ft - 83.8 ft / 10,5 m - 25,6 m	263.4 ft / 80.3 m	TMS9000-2

Carrydeck					
YB4409	8.5 USt / 7,7 t	21/31 ft / 6,5/9,5 m	6 ft / 1,8 m	36 ft / 10,9 m	YB4409
YB4409XL	8.5 USt / 7,7 t	30/40 ft / 9,2/12,2 m	6 ft / 1,8 m	45 ft / 13,7 m	YB4409XL
YB4409-2	9 USt / 8,1 t	33 ft / 10,1 m	12/18 ft / 3,6/5,4 m	54 ft / 16,5 m	YB4409-2
YB4411	10.5 USt / 9,5 t	33 ft / 10,1 m	12/18 ft / 3,6/5,4 m	54 ft / 16,5 m	YB4411
YB5515 DF	15 USt / 13,6 t	41/52 ft / 12,5/15,9 m	15 ft / 4,6 m	70 ft / 21,3 m	YB5515 DF
YB5515-2	15 USt / 13,6 t	41/50 ft / 12,5/15,2 m	15 ft / 4,6 m	67 ft / 20,4 m	YB5515-2
NEW GCD15	15 USt / 13,6 t	41/50 ft / 12,5/15 m	15 ft / 4,6 m	69.5 ft / 21,2 m	GCD15
YB5520	20 USt / 18 t	54 ft / 16 m	15/25 ft / 4,6/7,6 m	86 ft / 26,2 m	YB5520
GCD25	25 USt / 22,7 t	71 ft / 21,6 m	17 ft / 5,1 m	95 ft / 28,9 m	GCD25

All-terrain					
GMK3060	65 USt / 60 t	141 ft / 43 m	29 ft - 49 ft / 8,7 m - 15 m	197 ft / 60 m	GMK3060
GMK4100B	100 USt / 80 t	167 ft / 51 m	29 ft - 69 ft / 8,7 m - 21 m	246 ft / 75 m	GMK4100B
GMK4100L-1	115 USt / 100 t	197 ft / 60 m	36 ft - 84 ft / 11 m - 25,6 m	292 ft / 89 m	GMK4100L-1
GMK5150	175 USt / 150 t	167 ft / 50,8 m	36 ft - 110 ft / 11,2 m - 33,8 m	289 ft / 88 m	GMK5150
GMK5150L	175 USt / 150 t	197 ft / 60 m	36 ft - 110 ft / 11,2 m - 33,8 m	318 ft / 97 m	GMK5150L
GMK5180-1	210 USt / 180 t	210 ft / 64 m	36 ft - 112 ft / 11 m - 34 m	331 ft / 101 m	GMK5180-1
GMK5200-1	240 USt / 200 t	210 ft / 64 m	36 ft - 112 ft / 11 m - 34 m	331 ft / 101 m	GMK5200-1
GMK5250L	300 USt / 250 t	230 ft / 70 m	39 ft - 121 ft / 12 m - 37 m	361 ft / 110 m	GMK5250L
GMK6300L	350 USt / 300 t	263 ft / 80 m	39 - 121 ft / 12 m - 37 m	393 ft / 120 m	GMK6300L
GMK6400	450 USt / 400 t	197 ft / 60 m	39 - 259 ft / 12 m - 79 m	449 ft / 137 m	GMK6400
GMK7550	550 USt / 450 t	197 ft / 60 m	39 - 259 ft / 12 m - 79 m	449 ft / 137 m	GMK7550

Telescoping Crawler					
NEW GHC30	30 USt / 30 t	83 ft / 25,2 m	21 ft 4 in - 42 ft 8 in / 6,5 m - 13 m	132 ft / 40,2 m	GHC30
GHC50	50 USt / 45 t	99 ft 9 in / 30,4 m	21 ft 4 in - 42 ft 8 in / 6,5 m - 13 m	149 ft / 45,4 m	GHC50
GHC55	55 USt / 50 t	99 ft 9 in / 30,4 m	21 ft 4 in - 42 ft 8 in / 6,5 m - 13 m	149 ft / 45,4 m	GHC55
GHC75	75 USt / 70 t	118 ft 1 in / 36 m	26 ft 3 in - 49 ft 3 in / 8 m - 15 m	173 ft / 52,7 m	GHC75
GHC130	132 USt / 120 t	131 ft 11 in / 40,2 m	26 ft 3 in - 88 ft 7 in / 8 m - 27 m	229 ft 8 in / 70 m	GHC130