



# REVOLUTIONIZE THE RESIDENTIAL HOME BUILDING MARKET

with the Igo MA 21 Self-Erecting Tower Crane

DELIVERING RESULTS IN ALL STAGES OF THE HOME BUILDING PROCESS:



MASONRY



CONCRETE



FLOOR JOISTS



PRE-FAB  
WALLS



ASSEMBLED  
TRUSSES



ROOFING



LANDSCAPING



**POTAIN®**

by **Manitowoc**

# TAKE CONTROL OF YOUR TIME AND LABOR COSTS. BE MORE EFFICIENT ON THE JOBSITE.

As a specialized tool for the home building market, the Igo MA 21 self-erecting tower crane provides many benefits when compared with other equipment used on the residential construction jobsite.

## Fast Setup and Onsite Moves

Hydraulic outriggers, integrated counterweights and simple assembly ensure a rapid onsite setup.

## Versatile Solution

One piece of equipment replaces several specialized types of material handling equipment.

## Green Equipment

No exhaust, loud engines, DEF or city noise ordinance issues mean real environmental advantages.

## Multiple Power Sources

The Igo MA 21 can run from site power or generator, and can be operated from multiple means of AC power sources – 230v single phase or 480v three phase.

## Up and Over Reach

Place materials exactly where you need them with the Igo MA 21's versatile up and over reaching capabilities.

## No Trace Left Behind

Install the crane without a foundation. Remove it with nothing to clean up or remove.

## Lower Maintenance Costs

With fewer wear items and maintenance intervals, the Igo MA 21 reduces maintenance costs.



### LIFT MASONRY BLOCKS WHERE YOU NEED THEM

- No longer dependent on maneuvering a forklift or roadway access
- Every square foot of road now becomes a laydown area
- No forklift fuel, exhaust or noise
- No forklift ruts in ground around the property
- No mess in the street to clean up later



### MOVE BUCKET TO WHERE CONCRETE NEEDS TO BE POURED

- Better access to pour area – no navigating fences or rock paths
- Eliminates expense of concrete pump trucks for small pours
- Move more than a wheelbarrow of concrete at a time
- Less labor required to move materials manually on the project site



### HELP SET FLOOR JOISTS INTO PLACE

- No moving wood by hand and installing joists manually
- Crane can be used to efficiently set floor joist on second-story house
- Significant workload reduction



### LIFT PRE-FABRICATED WALL SECTIONS FROM TRUCK TO WALL LOCATION

- Pre-construct walls in a controlled environment – cleaner than jobsite
- Crane can hold walls upright and move into place
- Reduction in manual labor and associated costs



### DELIVER ASSEMBLED ROOF TRUSSES TO THE JOBSITE AND LIFT INTO PLACE

- No need to contract a special delivery from a knuckleboom truck and forklift
- Less downtime waiting for equipment to arrive
- Eliminates unnecessary trucking and driving around jobsite – less ruts around the property



### MOVE SHEETROCK AND ROOFING MATERIALS DIRECTLY TO ROOF LOCATION

- No need to contract a special delivery of a conveyor
- Most effective way to move materials
- Place materials where they are needed
- Less labor required to complete the job



### USE A HOPPER TO MOVE LANDSCAPE MATERIALS WHERE NEEDED

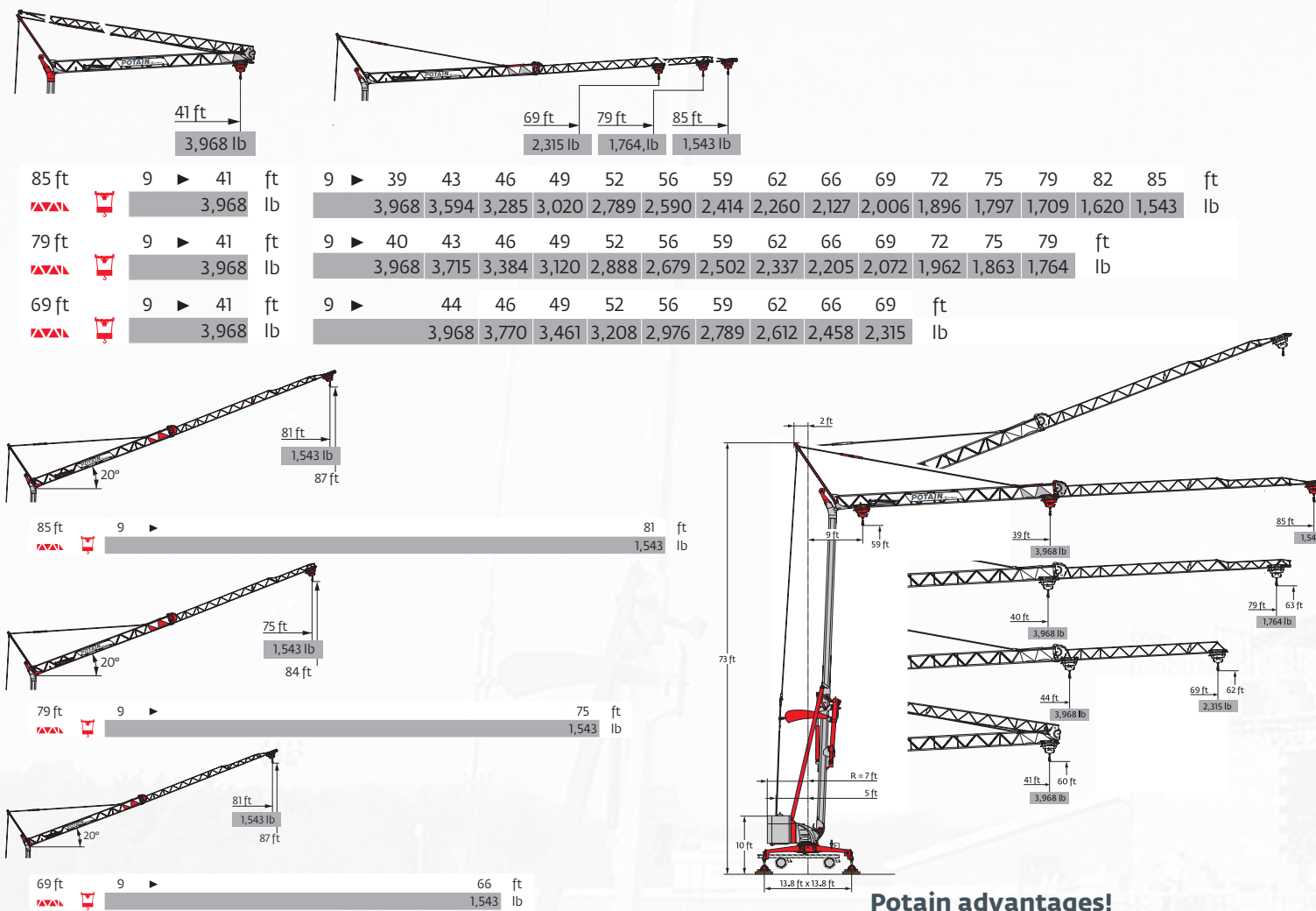
- Up and over reach of the crane effortlessly transports materials to desired locations
- Flexibility to move materials where they need to be installed on a tight jobsite
- Hopper can move more materials at one time faster than traditional equipment
- No wasted materials spilled by wheelbarrows
- Less mess and damage to property





# LEARN MORE ABOUT THE IGO MA 21

## IGO MA 21 JIB CONFIGURATIONS

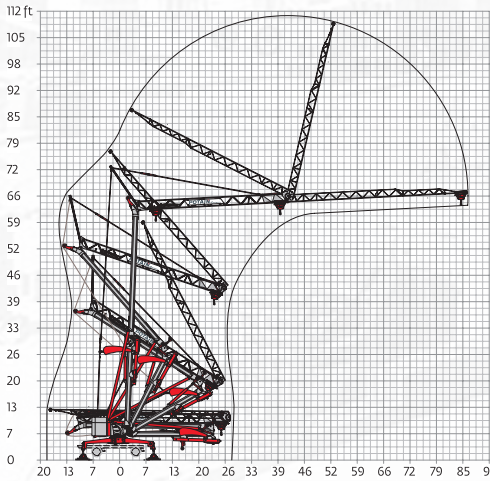


## EFFICIENT JOBSITE INSTALLATION

- FAST SET-UP
- Wireless remote set-up
- Hydraulic outriggers operated from remote
- Self contained counterweight
- Small space required on-site



### Potain advantages!



## ADAPTABLE POWER FOR OPERATION



480 V THREE-PHASE or 230 V SINGLE PHASE

### Connection Information



480 V connector

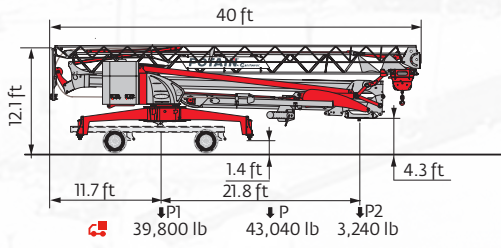
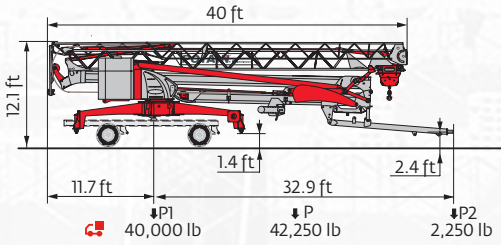
230 V connector

kVA
230 V 20A : 4.6 kVA
230 V 32A : 7.4 kVA
480 V : 11 kVA

## TRANSPORTING THE IGO MA 21

### FIXED SPREAD AXLE

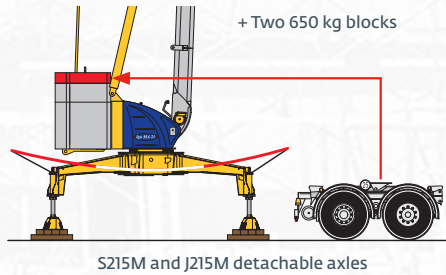
- Standard configuration
- Special North American transport axle - Federal bridge legal in 50 states
- Tow by fifth wheel or pintle hook



### REMOVABLE AXLE

- Utilize standard tandem NA axle
- KIT 209 Required
- Additional ballast required

Additional ballast: 2 blocks x 650 kg  
Base ballast: 2 blocks x 1260 kg + 2 blocks x 2890 kg



### RETURN WITHOUT CRANE

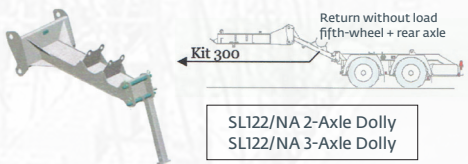
#### SL122 Fifth Wheel Kit

- Connection point between crane and truck



#### Kit 300 Adaptation Kit

- Used to return Dolly / SL122 5th wheel Kit



### LONG TERM SAVINGS:

- Potain dolly systems can be utilized with various self-erecting models

Lower overall fleet cost when owning multiple cranes or models.



# RESULTS FROM THE FIELD!

## THE COST SAVINGS ADVANTAGE OF SELF-ERECTORS

Potain self-erecting tower cranes are a mainstay of the global construction industry and are now taking hold in the residential homebuilding market in North America. These cranes offer significant cost advantages for hoisting and material handling in all stages of the homebuilding process when compared to the conventional equipment currently in use today.

### CALCULATE YOUR POTENTIAL SAVINGS BELOW.

Cost based on a 4-month, 3-story construction project.

	ESTIMATED 4-MONTH COST*	ESTIMATE YOUR TOTAL COSTS & COST SAVINGS
Cost of self-erecting tower crane rental	\$40,000	\$
<b>ELIMINATE THESE PROJECT EXPENSES...</b>		
4 Framers at \$4,000 per month	\$64,000	\$
All terrain forklift rental at \$3,750 per month	\$15,000	\$
Mobile crane or telehandler for trusses rental	\$3,000	\$
Masonry laborers for material handling	\$3,000	\$
Road construction for around building	\$6,000	\$
Stone slinger for pea gravel around site	\$4,000	\$
Pump truck costs for columns, footings, and walls	\$4,000	\$
	-	\$
	-	\$
	-	\$
<b>Total cost WITHOUT self-erecting tower crane</b>	<b>\$99,000</b>	<b>\$</b>
<b>NET SAVINGS ON PROJECT W/ RENTAL</b>	<b>\$59,000</b>	<b>\$</b>

\*Above estimated costs and savings are based on a true jobsite in North America

## COMPLETION OF 3 PROJECTS IN ONE YEAR CAN YIELD NET SAVINGS OF \$177,000!

Contact your local dealer today and learn how the Igo MA 21 self-erecting tower crane can revolutionize your business!

Go to [www.manitowoc.com](http://www.manitowoc.com) and click 'dealer locator' at the top of the page.

**Manitowoc Cranes**



### Regional headquarters

#### Americas

Milwaukee, Wisconsin, USA  
Tel: +1 414 760 4600

Shady Grove, Pennsylvania, USA  
Tel: +1 717 597 8121  
Fax: +1 717 597 4062

This document is non-contractual. Constant improvement and engineering progress make it necessary that we reserve the right to make specification, equipment, and price changes without notice. Illustrations shown may include optional equipment and accessories and may not include all standard equipment.

[www.manitowoc.com](http://www.manitowoc.com)