

CraneSTAR

Features and benefits



- Dual-mode communication
- User-friendly Web site
- Mapping and geo-fence
- Built-in diagnostic tools
- System integration and more



CraneSTAR. Built by crane professionals — for crane professionals.

Features and benefits

As the most extensive OEM-produced crane asset management system available today, CraneSTAR leads in a new era of data management and planning for crane owners around the world.

CraneSTAR gives you up-to-date crane fleet information, no matter where you or your cranes are located. You can monitor locations and working conditions; plan maintenance and lifting schedules; and maximize your company's efficiency, productivity and profitability.

Rugged construction

CraneSTAR is designed for the tough applications your cranes see on a daily basis. All hardware is weatherproof and meets or exceeds industry environmental standards as well as SAE J1455 specifications for mechanical, electrical and environmental design and use. With its IP67 sealed, compact aluminum enclosure, the hardware is built to withstand harsh environments.

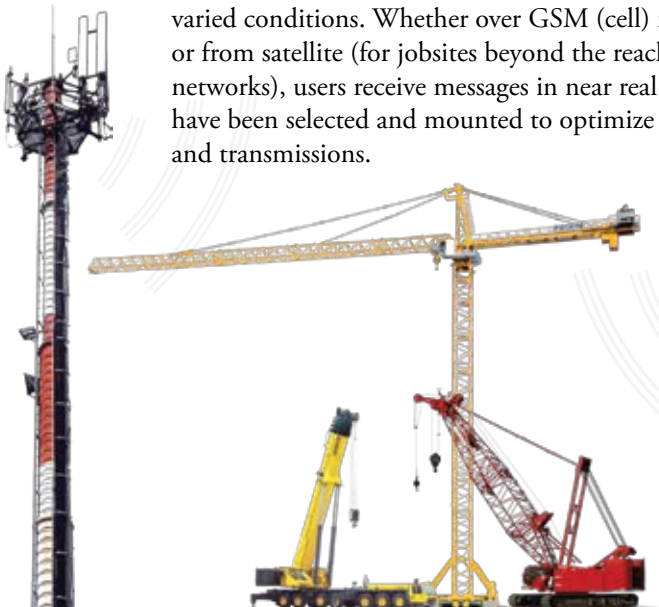
Built-in diagnostic tools

CraneSTAR allows for efficient troubleshooting with six onboard LEDs. A complete user guide is also available to help maintain and troubleshoot all components.



Dual-mode communication

Dual-mode communications provide versatility and flexibility to ensure the system can communicate under varied conditions. Whether over GSM (cell) networks or from satellite (for jobsites beyond the reach of GSM networks), users receive messages in near real time. Antennas have been selected and mounted to optimize signal strength and transmissions.

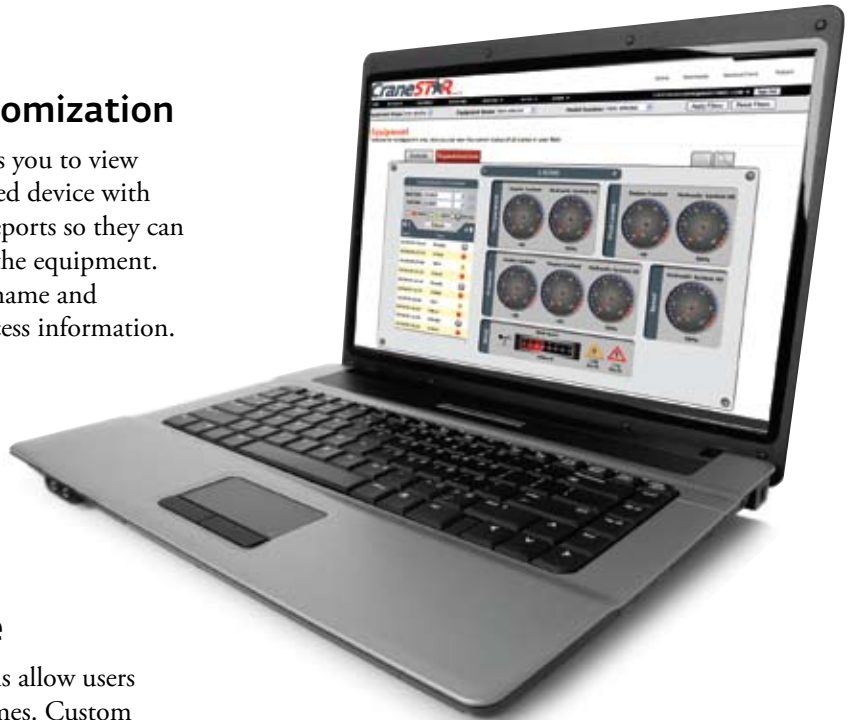


Advanced communications technology

By using the latest processor and communications technology on the market today, CraneSTAR can function nearly anywhere on the globe. CraneSTAR features a 32-bit processor, GPS, quad-band GSM, and satellite channels. These features provide the best possible options for GSM connectivity around the world.

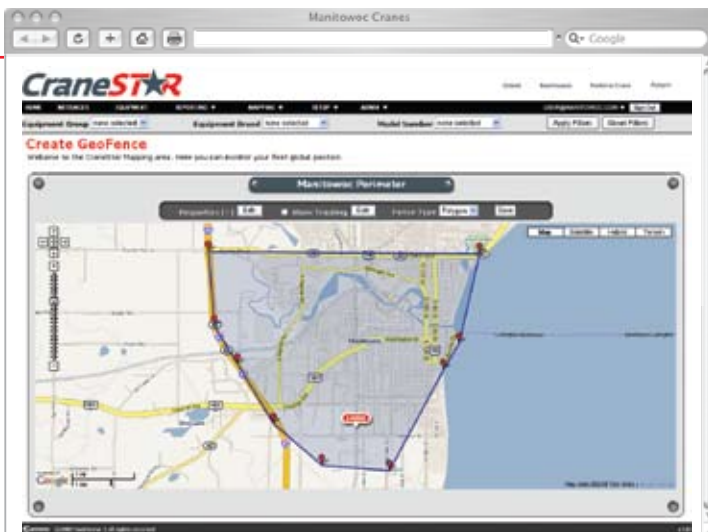
Easy data retrieval and customization

The easy-to-use CraneSTAR Web site allows you to view your crane data from any PC or Web-enabled device with Internet connection. Users can customize reports so they can analyze data quickly and identify trends in the equipment. This secure Web site provides users a login name and password and ability to control who can access information.



Mapping and geo-fence

The mapping and geo-fence functions allow users to know where the assets are at all times. Custom setup tools and location tracking provide users the opportunity to monitor the fleet on a local, regional, national, or global level. Users can also define a jobsite boundary or fence an entire state or country.



CraneSTAR
EQUIPPED

Standard installation

Available in Q3 of 2009, CraneSTAR will be phased in as standard equipment on many new models of Manitowoc cranes. Please check our Web site for specific model information.

System integration

CraneSTAR helps you manage your assets and your business by easily exporting data from the system database to your business system or any program you choose. With daily and historical data from the asset users can integrate with existing business systems for more accurate reporting and management of assets.

Data monitoring

CraneSTAR reduces costs and improves profitability by helping users monitor critical data, recognize trends, and make more efficient decisions. Users can monitor engine use, location changes, daily productivity, critical systems — and more. By monitoring and reducing idle time, users can save on fuel costs. Users can also monitor equipment for routine service and keep equipment running longer with improved maintenance.



Manitowoc regional headquarters

Americas

Manitowoc Cranes
2401 S. 30th Street
Manitowoc, WI 54220 USA

Tel: +1 920 684 6621

Fax: +1 920 683 6277

Shady Grove Facility
1565 Buchanan Trail East
Shady Grove, PA 17256 USA

Tel: +1 717 597 8121

Fax: +1 717 592 5929

Europe, Middle East and Africa

Manitowoc France SAS
18, rue de Charbonnières B.P. 173
69132 ECULLY Cedex, France

Tél: +33 (0)4 72 18 20 20

Fax: +33 (0)4 72 18 20 00

Asia-Pacific

Manitowoc Shanghai
16F Xu Hui Yuan Building
1089 Zhongshan No. 2 Road (S)
SHANGHAI 200030 China

Tel: + 86 21 6457 0066

Fax: +86 21 6457 4955

www.manitowoc.com