


# Grove GCK3045

## Features and benefits

 45 t

 34 m

 6,3 m - 10,2 m

 47 m



## Content

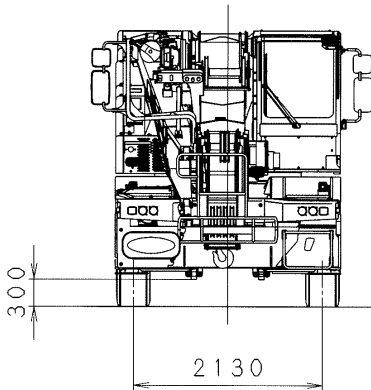
Dimensions and weights	3
Boom	4
Jib / Runner / Hookblocks	5
Driveline / Engine	7
Steering	8
Outriggers	9
Cab and instrumentation	10
Access	11
Storage	12
Accessories	13

The GCK3045 city crane is a compact three-axle single cab with a "boom down" design, making it ideal for work in **city centres and indoor industrial locations.**

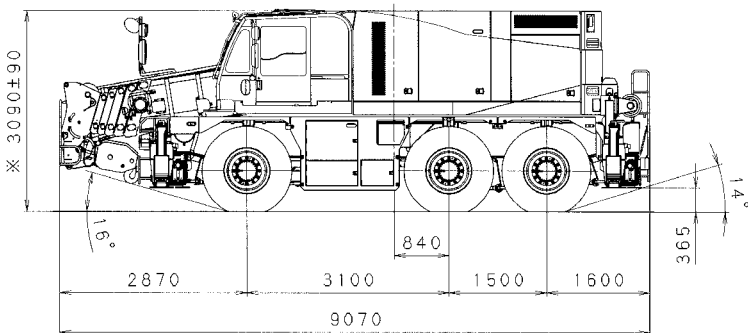
- Long boom: 34 m
- Powerful drive
- Tight turning radius
- Rigging within carrier width
- Fully equipped within 12 t per axle
- Highly manoeuvrable



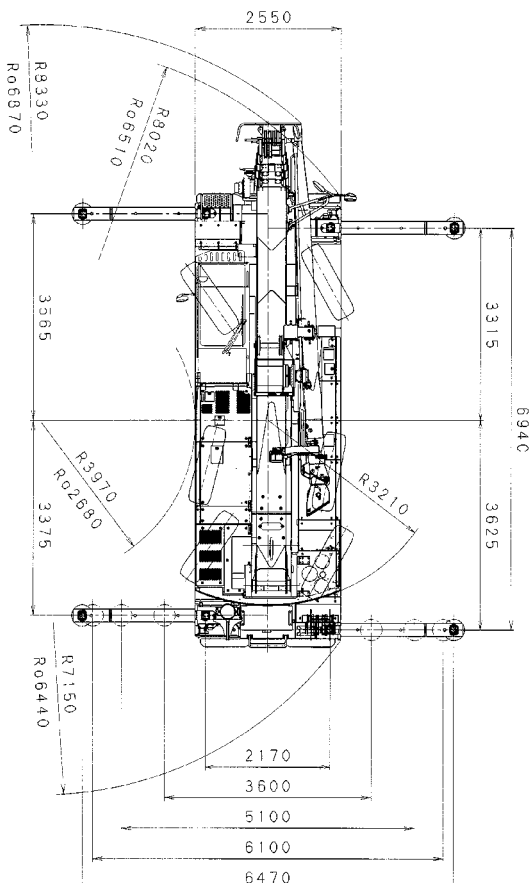
## Dimensions and weights



Dynamic test 50 t = 40 t x 1,25



Rated load 28,5 t x 4,5 m



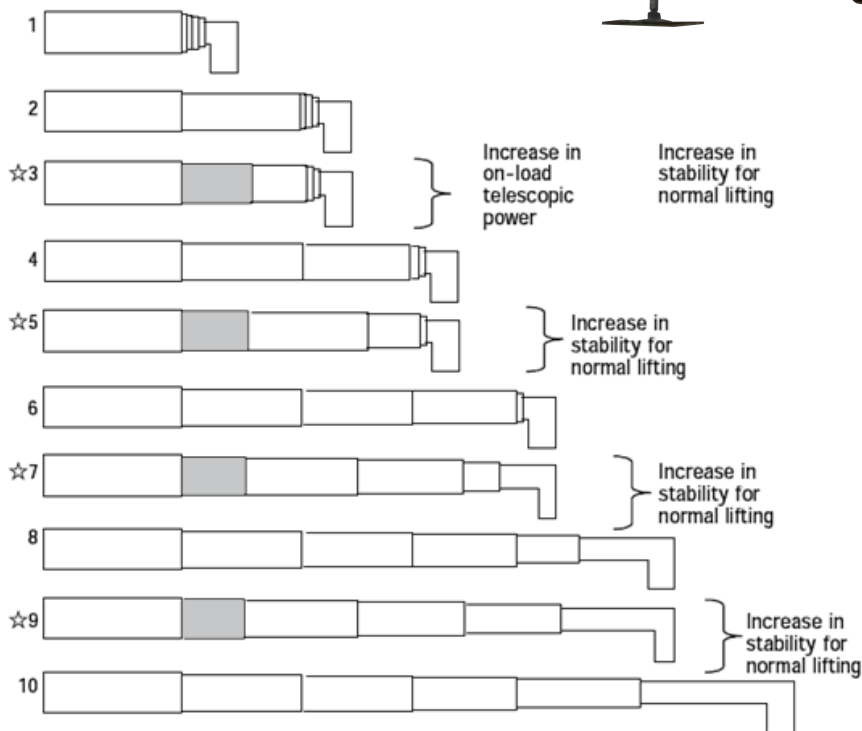
- Only 2,55 m wide for driving through narrow doors.
- 9,07 m length and tight turning radius for easy manoeuvres on jobsite.
- 3,00 m high for better accessibility and operating in low buildings.
- Axle loads: 3 x 12 t incl. 6x6x6 drive/steer, twist jib, runner, headache ball, rigging equipment.

# Boom

Six-sections full power boom from 7,9 m to 34 m.



Lifting capacities are optimized through variation of boom extension sequences.



☆marks are 4 additional combinations.

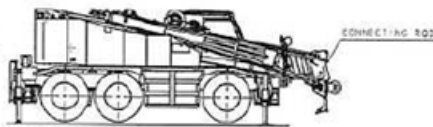


Hydraulic rigging assist drum with remote pendant control lowers jib to vertical position.

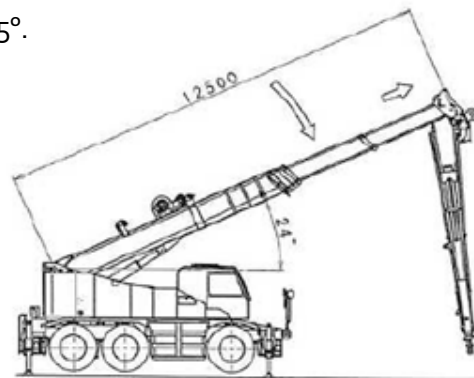


**Twist jib: easy rigging in confined spaces**

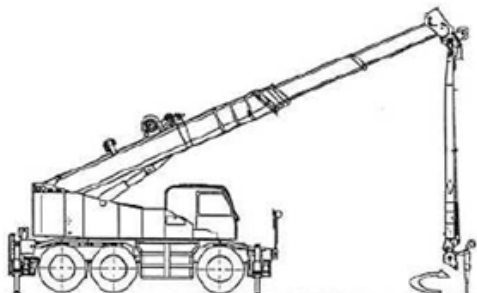
Two-section jib 6,3 m/10,2 m offsets at 5°, 25° and 45°.



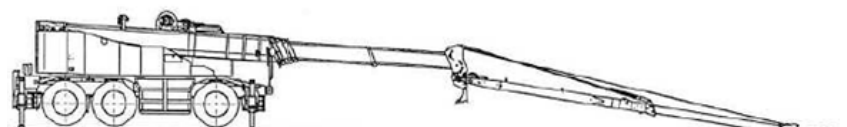
1 - Transport width within 2,55 m.



2 - Elevate boom and release jib (stays within 2,55 m).



3 - Twist jib in correct position and bolt (stays in 2,55 m).



4 - Ready for work.

This twist jib format creates the possibility to rig the jib within the carrier width.

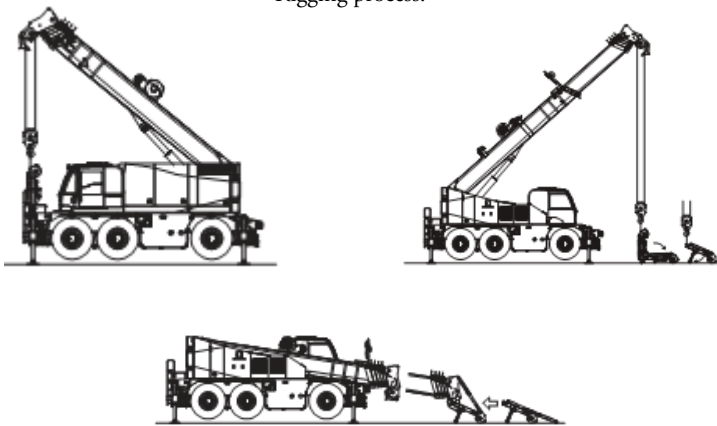
## Twist jib, runner, hookblocks

**Runner:** The runner allows the operator to gain more hook height under overhead obstructions while working indoors.

Offsets in three positions.

Maximum lift: 15 t.

Rigging process.



Storage on rear of chassis.

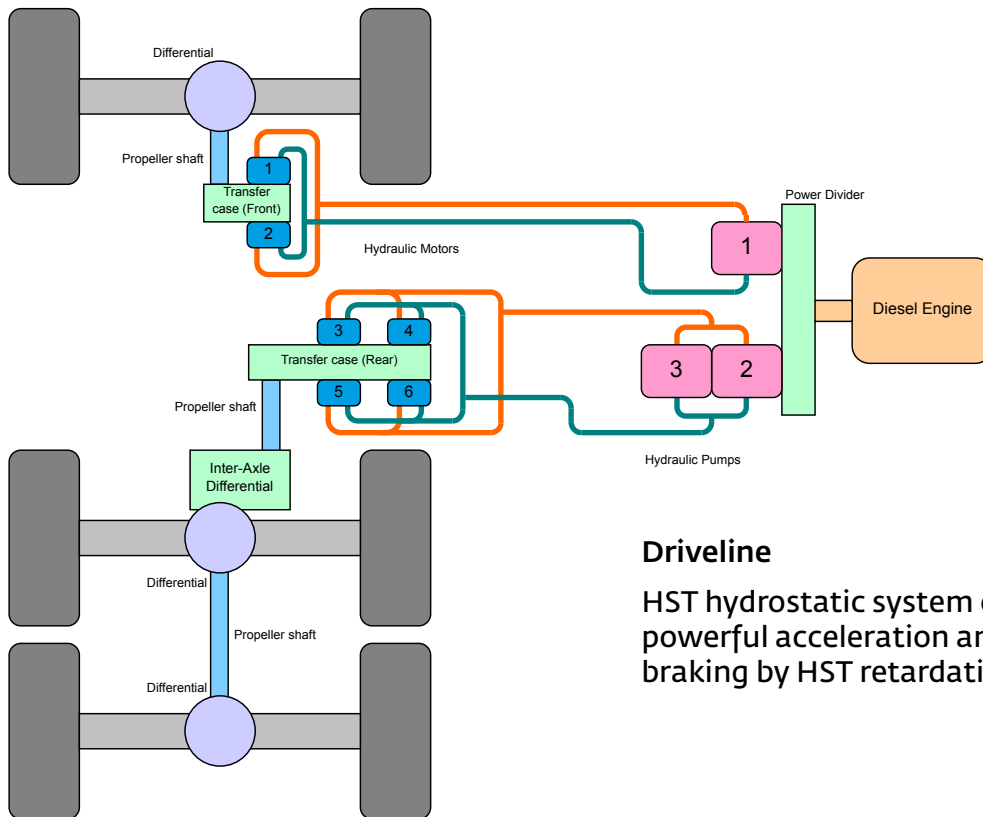


Automatic **hookblock stowage** for easy remote handling. No need to tie down hookblock on front bumper.

## Searcher Hook

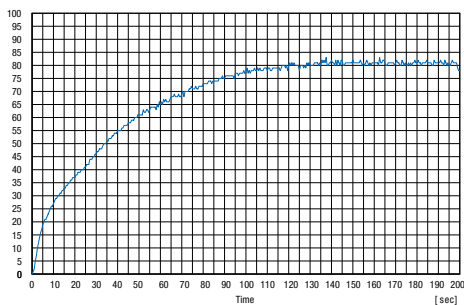
12,5 t capacity.  
Allows additional reach under overhead obstructions.





**Driveline**

HST hydrostatic system offers powerful acceleration and efficient braking by HST retardation.



Acceleration pattern.

**Engine : HINO E 13 C.**  
 Six cylinder common rail diesel engine  
 superstructure mounted  
 330 kW @ 1800 rpm.  
 Euromot IIIA.



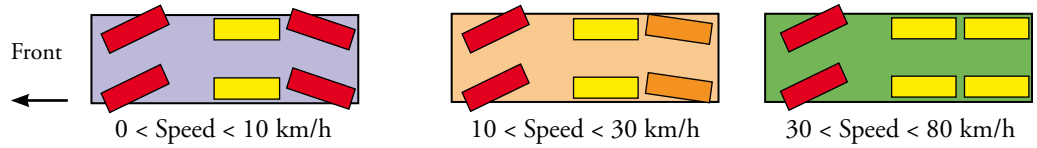
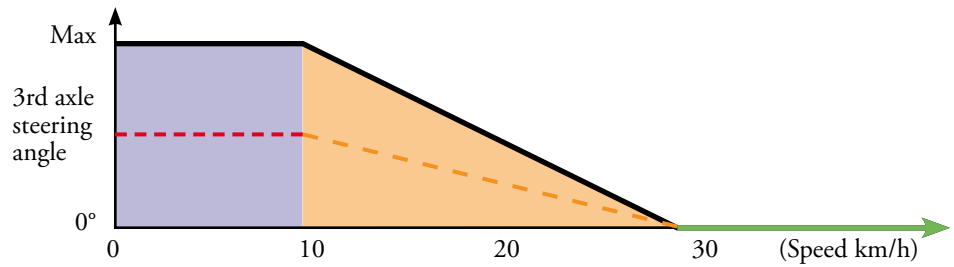
# Steering

## "Steer by wire" - Electronic rear wheel steer

### On-road

#### Wear reduction on tires

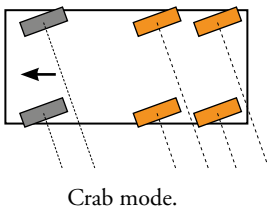
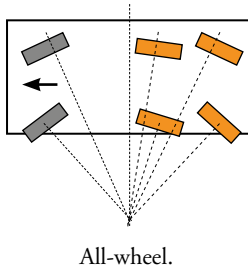
3rd axle automatically adjusted by detecting the 1st axle steering angle.



Speed range at 0-10 km/h: steering angle of the 3rd axle is adjusted to maintain the same center of rotation (reduces tire wear and tear).

Speed range at 10-30 km/h: steering angle of 3rd axle is gradually reduced as the speed goes up.

Speed range at 30-80 km/h: 3rd axle mechanically locked.

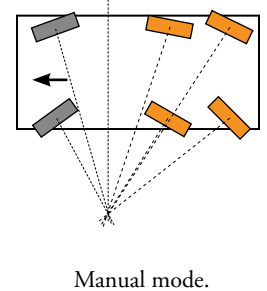
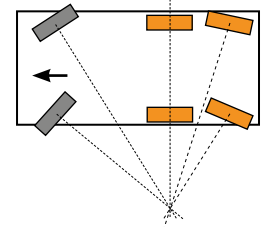
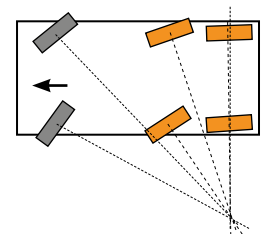


### Off-road

#### Coordinated all-wheel and crab steering:

First axle manual steer, second and third axle follow axle 1 for tightest turning radius.

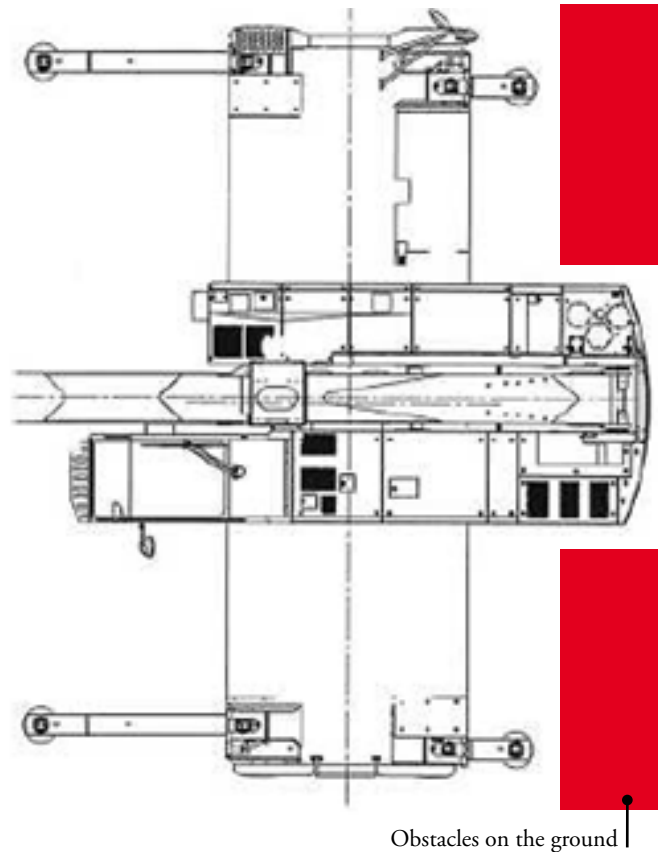
**Manual steering:** First axle manual steer, axle two and three by joystick for variable steering angle.



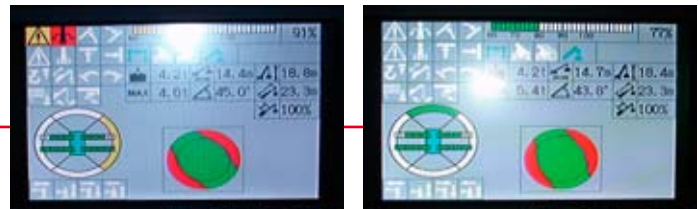
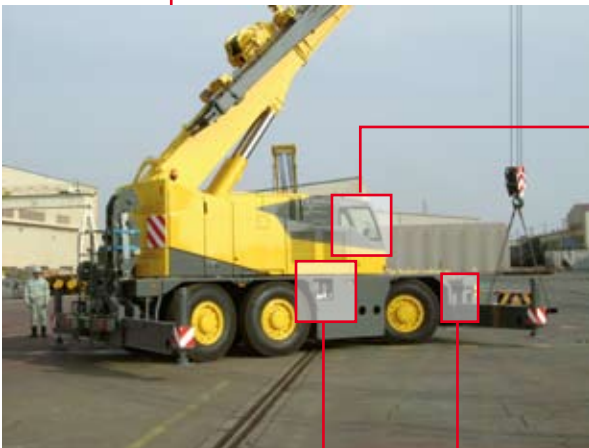
## Outriggers

**Five position outriggers to operate in confined spaces.**

**Odd outrigger selection** enables crane set-up with individual extension of each outrigger beam. Combination of **LMI programming** and **working range limiter** functions ensures safe lifting through 360°. The odd outrigger set-up creates the possibility to gain access to narrow job sites.



LMI monitor-crane on outrigger set-up.  
91 % utilization      50 % utilization



Outrigger lock pins  
Outrigger extension  
potentiometer.



« Bubble » level gauge.



Outrigger controls on carrier  
and upper works.

## Cab and instrumentation

All working configurations and crane data are shown on the LMI monitor.



Selection of either hoist or rear view on video monitor.



Automotive style dashboard.



LMI control panel.



Driving, steering and suspension control.

Air conditioning standard.



Hoist camera and light.



Rear view camera.



Easy and safe access for fueling.  
Extendable platform with rear access ladder attached.



Rear steps.

Cab over side.  
Side step 150 mm.  
Joystick pedestal folding back for access.



Platform and access ladder for fueling.



Front steps.

**Storage**



**Outrigger spot lights**  
for each outrigger.



**Stowage space**  
on carrier.



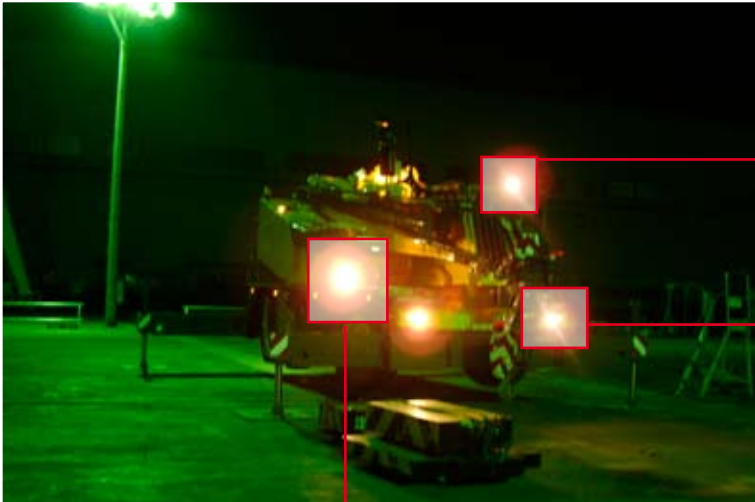
**Rigging box**  
on the back  
of the crane.



**Wheel chocks**  
stowed on carrier front.



Night time illumination with three spotlights.



Cab roof and lower turntable lights.



Boom light.



Microphone and speaker.







## Regional headquarters

### Manitowoc - Americas

**Manitowoc, Wisconsin, USA**

Tel: +1 920 684 6621

Fax: +1 920 683 6277

**Shady Grove, Pennsylvania, USA**

Tel: +1 717 597 8121

Fax: +1 717 597 4062

### Manitowoc - Europe, Middle East & Africa

**Ecully, France**

Tel: +33 (0)4 72 18 20 20

Fax: +33 (0)4 72 18 20 00

### Manitowoc - Asia Pacific

**Shanghai, China**

Tel: +86 21 6457 0066

Fax: +86 21 6457 4955

## Regional offices

### Americas

#### Brazil

Alphaville

#### Mexico

Monterrey

#### Chile

Santiago

### Europe, Middle East & Africa

#### Czech Republic

Netvorice

#### France

Baudemont

Cergy

Decines

#### Germany

Langenfeld

#### Hungary

Budapest

#### Italy

Lainate (MI)

#### Netherlands

Breda

#### Poland

Warsaw

### Portugal

Baltar

### Russia

Moscow

### U.A.E.

Dubai

### U.K.

Buckingham

### Asia - Pacific

#### Australia

Brisbane

Melbourne

Sydney

#### China

Beijing

Chengdu

Guangzhou

#### India

Delhi

Hyderabad

Pune

#### Korea

Seoul

#### Philippines

Makati City

Singapore

## Factories

### Brazil

Alphaville

### China

TaiAn

Zhangjiagang

### France

Charlieu

La Clayette

Moulins

### Germany

Wilhelmshaven

### India

Pune

### Italy

Niella Tanaro

### Portugal

Baltar

Fânzeres

### Slovakia

Saris

### USA

Manitowoc

Port Washington

Shady Grove

This document is non-contractual. Constant improvement and engineering progress make it necessary that we reserve the right to make specification, equipment, and price changes without notice. Illustrations shown may include optional equipment and accessories and may not include all standard equipment.